

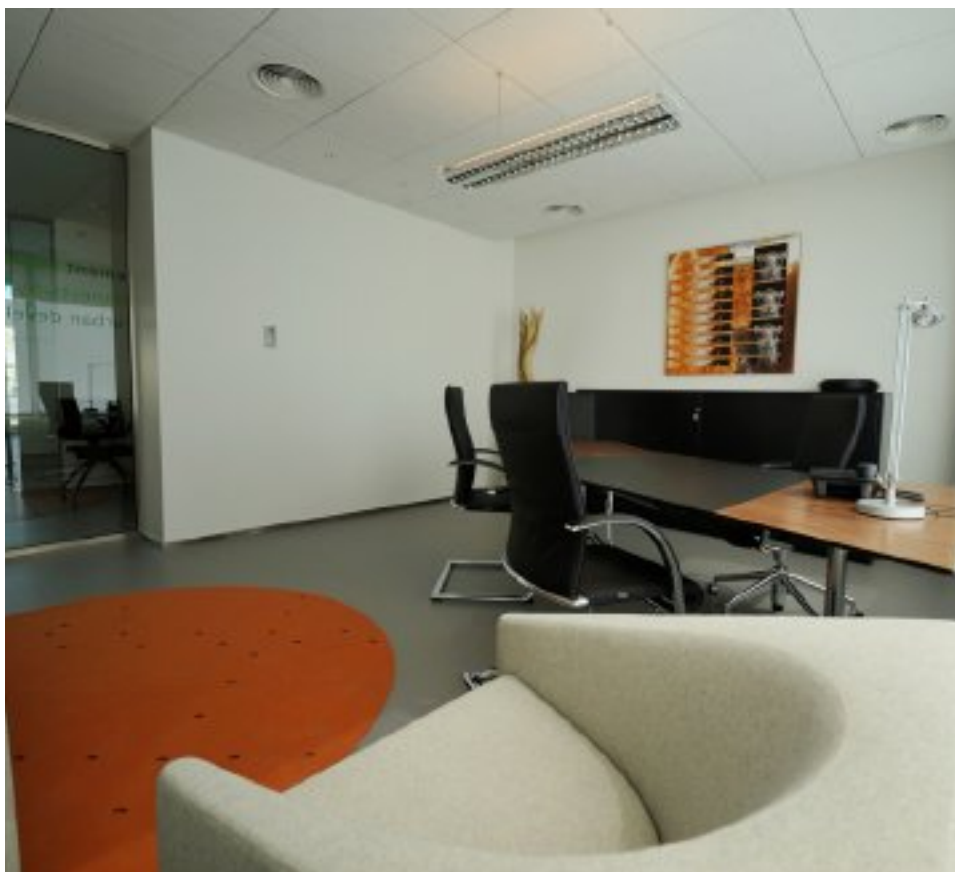
gulfinteriors

sourcing design

february 2010

profile: ernesto gismondi
focus: offices
project: neocasa's the loft
show guide: miff
sourcebook: wood

THE OFFICIAL MAGAZINE OF THE INDEX INTERIOR DESIGN SHOW



▲ Enclosed offices provide a dedicated space for private communication and a place to work without external distractions



▲ Heidi Demuyne, interior designer and sales director at Summertown Interiors says that it's all about crisp office design and keeping the fluff out

Nick says that clients are willing to spend on big-name manufacturers for ergonomic office chairs, but may not stretch their budgets to the desk and workstation. With many multinationals implementing global health and safety guidelines for office furniture specification, he notes that rise-and-fall workstations (which allow the user to work seated or standing up) have proved to be popular. Bench-style workstations such as the Joyn bench by Vitra are also popular as they allow for flexibility in configuration and usage, and encourage communication and effective teamwork. The falling cost of flat screen technology has encouraged greater use of monitor arms which, in turn, means compact desk systems can be specified.

However, CitySpace believes that ergonomics is much more than furniture features and adjustability. "Ergonomics is a holistic approach that takes into consideration how people interact with the whole physical environment, from the office layout to lighting, acoustic levels, air quality, variety of task spaces and opportunities to stretch and relax."

Closing time

Office design is the mirror of the time-bounded work concept and the company's ethos combined with the economic environment, says Heidi. "Every good business fit-out should have their brand guidelines and work ethos transferred to their environment; from the employees' behaviour to the space plan, fixtures and fittings. It is not sufficient to have the logo, a couple of brochures and a LCD screen playing the company's mission and vision in the reception as this does not reflect the heart of a firm."

Heidi concludes: "Office design will change as it has always done over the years. Going forward projects must be more human friendly, it's about crisp office design and keeping the fluff out." **91**



▲ The snake-like shape of the leather pebble seating in Société Générale's corporate colours can easily be re-configured to suit the requirements of the users

Workstations of Wonder



Specific or simple

Homework is an adaptable desk system from London-based designer Robin Grasby. The desk is suitable for the office, home or studio and enables the user to customise every element of their workplace. They can decide on everything from surface size and materials to storage and accessories. "The user can create an environment as rich and specifically personalised or as simple and generic as they require," says Robin.

His work was exhibited at imm cologne as part of the D3 Young Designers Contest, for which Homework was shortlisted.



Prototype prodigy

Currently studying Architecture at Lincoln University in the UK, Luke Rigall is already bringing some exciting designs to the table. Case in point: Novanta, (translates as 90 in reference to its shape) is a workstation designed by designers, for designers. He says that the aim of the project was to create a design that

would enhance the user's productivity, style and organisation. We say it's designed with Apple products in mind so we love it.

Luke sums it up: "Integration – all the essentials for computer and pen-based work integrated into a single tool. Style – a completely unique style that sits perfectly with Apple designed products. Organisation – four words; cable management and tailored drawers. Lifestyle – over 100,000,000 iPods worldwide, audio systems, laptops, large displays, gadgets and devices... Isn't it about time your desk caught up?" The prototype was made in MDF, but it could also be Corian.

Clamp Desk

The Clamp Desk – designed by Paul Coudamy and Benoit Coulondres – is a modular desktop created to be adaptable to the ever-changing needs of busy worker. The concept is based on a system of trestle and tray insert in a board. A translucent honeycomb PMMA sheet offers an exceptionally light and rigid worktop, while holes drilled in the panel allow for discreet cabling. The worktop is held in place by three combinable wood modules inserted directly into the board.

The trestle with metal 'U jaws' allows for more space on top and under the desk. A storage module can be inserted in the board; under it a door enables storage with easy access from the tabletop. The table leaf is built with a central hole in order to slide along the board. In a cantilever position you can add 70cm to the table length or simply use it to separate the work place: workers will be free to choose wood or the plastic board to work on. This one-person table can also suit autonomous uses beside the main desk.



Shelving system

Engineered and built by Peter Brochot and Biusch Man, the shelving system is testament to the principle of reuse, with the designers taking an existing storage system

to create shelving units. Wood shipping boxes have been fixed to OSB boards and then bent to create graphical contorted shapes. The unit is mounted with wheels and the mobile boxes offer extra storage and seating for visitors.

STATUS UPDATE: Facebook has a hot new HQ



▲ Lounges and open spaces provide easily-accessible venues for employees to come together

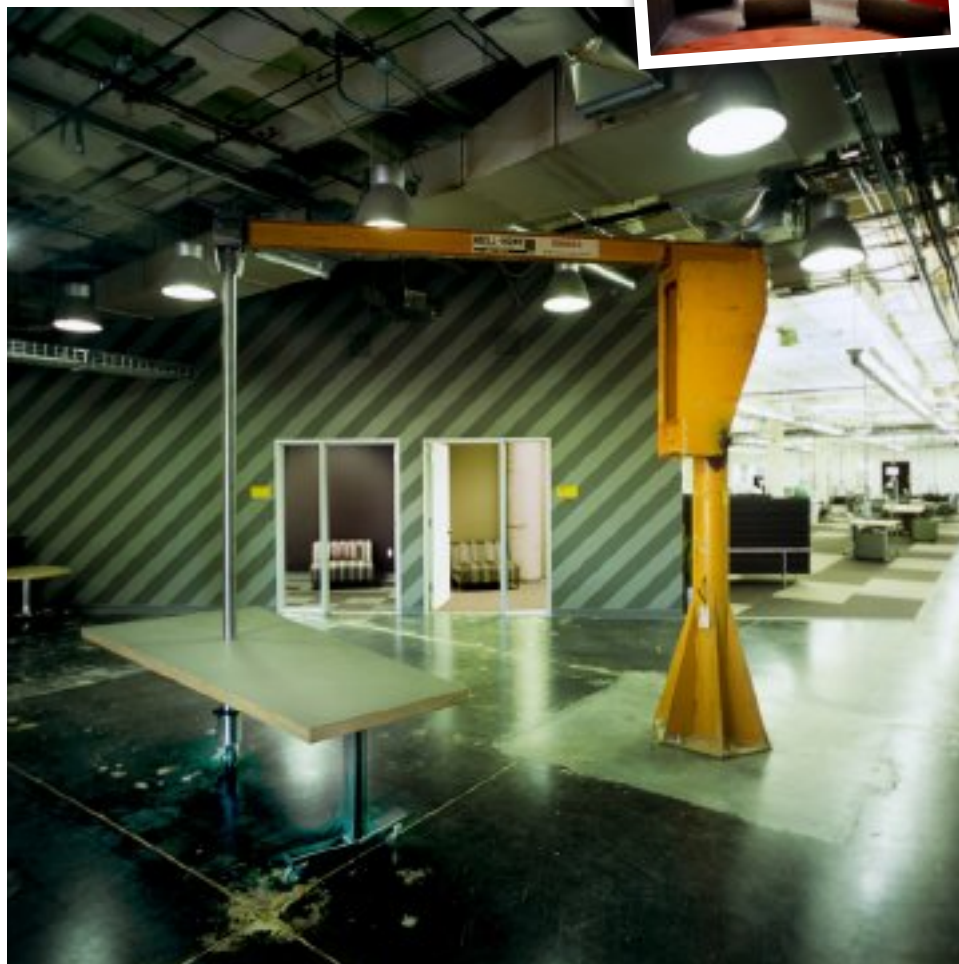


While Facebook has been busy taking over the world recently it has also taken over a new space in Palo Alto, California. Not entirely new, the organisation's headquarters are set in a reincarnated laboratory facility in Palo Alto's Stanford Research Park. The 150,000-sqft structure lassoes more than 700 of Facebook's employees who were previously distributed through ten different locations in and around the city's downtown.

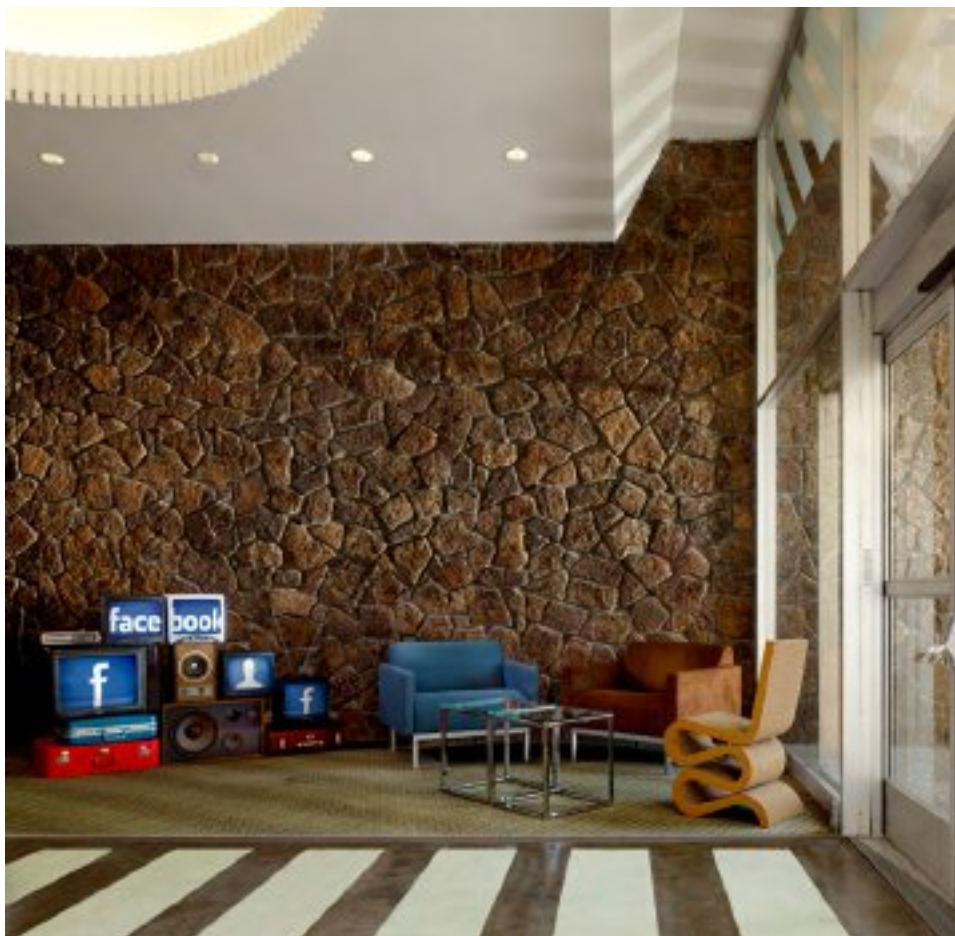
The minds behind the eclectic space are San Francisco-based interior design firm Studio O+A – founded by Primo Orpilla and Verda Alexander in the early 1990s and originally focused on creating sophisticated spaces for start-up companies.

Their brief was to create a light-hearted and fun environment suitable for the company's youthful staff and, at the same time, maintain the history and raw aesthetic of the building that was previously home to a high-tech manufacturer.

The designers explain that the process started with in depth engagement with the end users: "O+A designers interviewed employees about what they wanted from their new headquarters. The Facebook platform was used to conduct company-wide polls about design decisions, post construction photos and updates, and keep everyone informed of



▲ A bright orange industrial crane, left over from the building's previous user, was repurposed by San Francisco sculptor Oliver DiCicco to support a table surface from its heavyweight hoist, offering maximum maneuverability



▲ The minds behind the eclectic space are San Francisco-based interior design firm Studio O+A

the company's executives work in central areas, accessible to all employees, and large lounges and open spaces provide venues for the community to come together. To keep the space in a constant state of flux many of the walls and spaces are left unfinished so users can draw on the walls (without getting in trouble) and they are also free to add artwork and move furniture around as needed.

"A kitchen and café continue Facebook's tradition of providing gourmet meals to staff at all hours, while drinks and snacks are available at micro-kitchens throughout the headquarters." Yum. But to avoid expanding waistlines an outdoor basketball court and an indoor ping-pong table offer some active options and it's no surprise to see employees getting from A to B on skateboards.

Keeping the industrial aesthetic has been crucial to the design of the space, for example a felt canopy spreads up one wall and onto the ceiling to identify a central meeting area that can double as an auditorium when needed. The canopy is mounted on threaded rods of different lengths in order to create an undulating effect, it is penetrated by overhead lights at various intervals and also has sound absorption qualities. **gi**



MARCH 19-22, 2010
SHENZHEN International Furniture Exhibition
www.chinafurnitureexpo.com